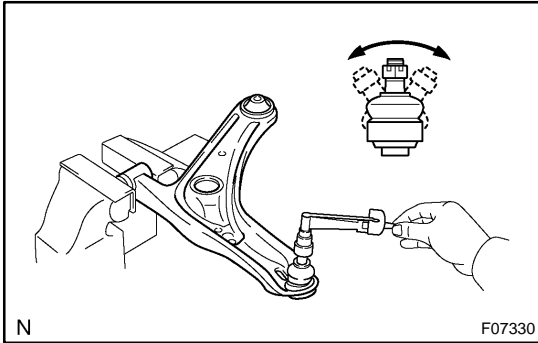


INSPECTION

1. INSPECT LOWER SUSPENSION ARM BALL JOINT BOOT FOR DAMAGE



2. INSPECT LOWER SUSPENSION ARM BALL JOINT FOR ROTATION CONDITION

- (a) As shown in the illustration, flip the ball joint stud back and forth 5 times, before installing the nut.
- (b) Using a torque wrench, turn the nut continuously at a rate of 2 - 4 seconds per 1 turn and take the torque reading on the 5th turn.

Turning torque:

0.59 - 3.43 N·m (6 - 35 kgf·cm, 5.2 - 30 in.-lbf)