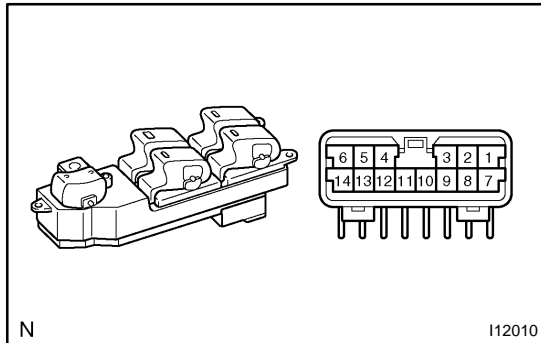


INSPECTION

- 2 door models driver's door (w/ Power window):
INSPECT DOOR LOCK CONTROL SWITCH CONTINUITY**

Switch position	Tester connection	Specified condition
LOCK	1 - 2	Continuity
OFF	-	No continuity
UNLOCK	1 - 5	Continuity

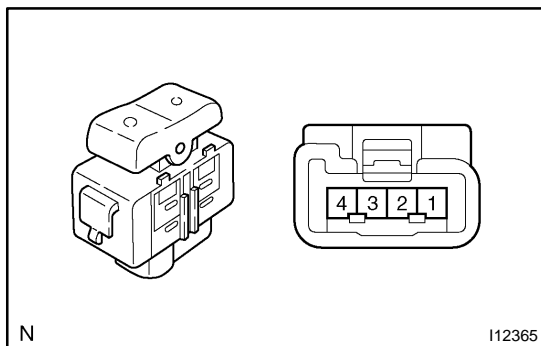
If continuity is not as specified, replace the switch.



- 4 door models driver's door (w/ Power window):
INSPECT DOOR LOCK CONTROL SWITCH CONTINUITY**

Switch position	Tester connection	Specified condition
LOCK	2 - 3, 2 - 4	Continuity
OFF	-	No continuity
UNLOCK	3 - 7, 4 - 7	Continuity

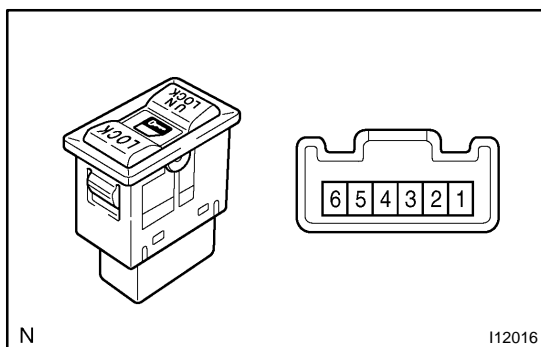
If continuity is not as specified, replace the switch.



- Passenger's door (w/ Power window):
INSPECT DOOR LOCK CONTROL SWITCH CONTINUITY**

Switch position	Tester connection	Specified condition
LOCK	3 - 4	Continuity
OFF	-	No continuity
UNLOCK	2 - 4	Continuity

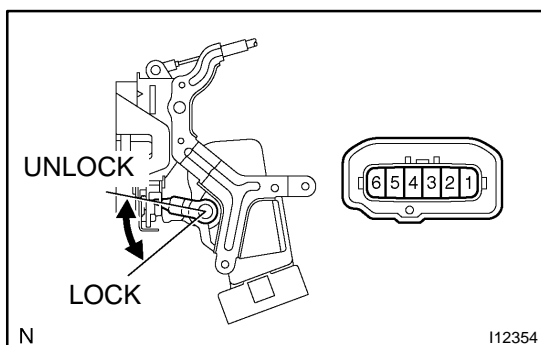
If continuity is not as specified, replace the switch.



- w/o Power window :
INSPECT DOOR LOCK CONTROL SWITCH CONTINUITY**

Switch position	Tester connection	Specified condition
LOCK	1 - 3	Continuity
OFF	-	No continuity
UNLOCK	1 - 6	Continuity
Illumination circuit	2 - 4	Continuity

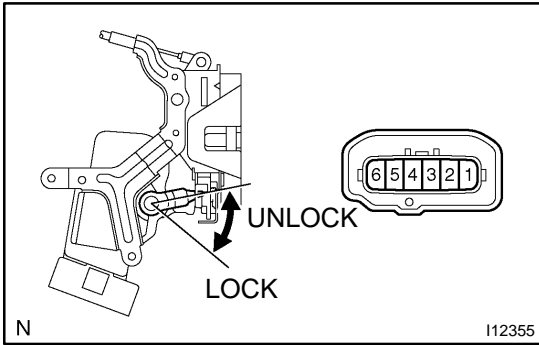
If continuity is not as specified, replace the switch.



- Front left side door:
INSPECT DOOR KEY LOCK AND UNLOCK SWITCH CONTINUITY**

Switch position	Tester connection	Specified condition
LOCK	3 - 5	Continuity
OFF	-	No continuity
UNLOCK	3 - 6	Continuity

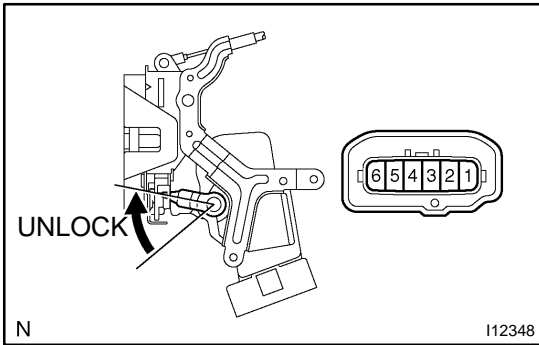
If continuity is not as specified, replace the door lock assembly.



**6. Front right side door:
INSPECT DOOR KEY LOCK AND UNLOCK SWITCH CONTINUITY**

Switch position	Tester connection	Specified condition
LOCK	2 - 4	Continuity
OFF	-	No continuity
UNLOCK	1 - 4	Continuity

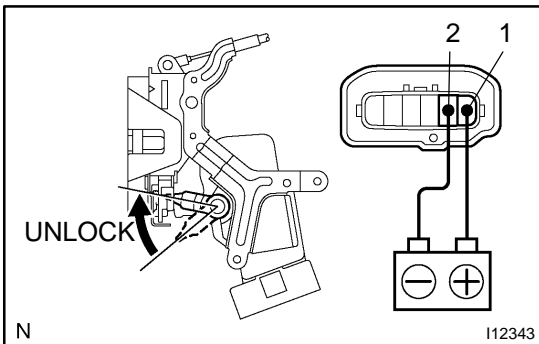
If continuity is not as specified, replace the door lock assembly.



**7. Driver's door:
INSPECT DOOR UNLOCK DETECTION SWITCH CONTINUITY**

Switch position	Tester connection	Specified condition
OFF (Door Lock set to LOCK)	-	No continuity
ON (Door Lock set to UNLOCK)	3 - 4	Continuity

If continuity is not as specified, replace the door lock assembly.

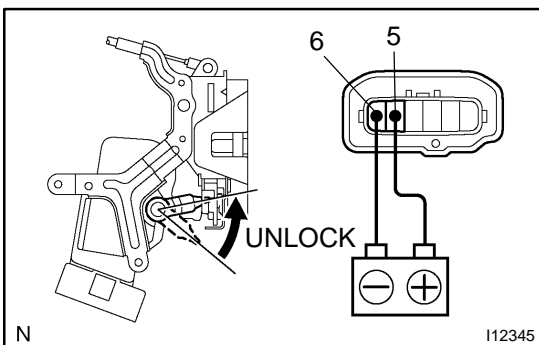
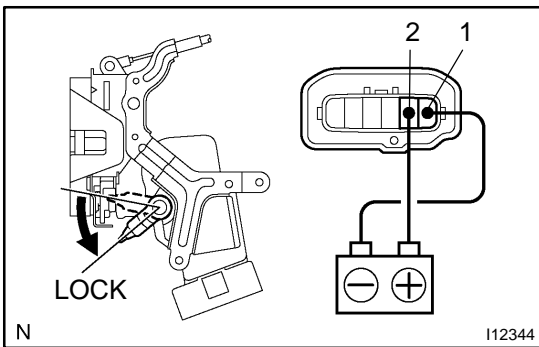


**8. Front left side door:
INSPECT DOOR LOCK MOTOR OPERATION**

(a) Connect the positive (+) lead from the battery to terminal 1 and the negative (-) lead to terminal 2, and check that the door lock link moves to UNLOCK position.

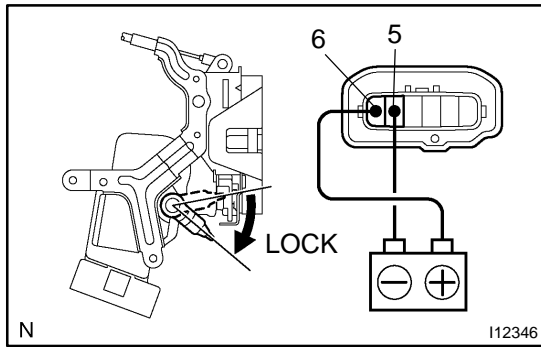
(b) Reverse the polarity and check that the door lock link moves to LOCK position.

If operation is not as specified, replace the door lock assembly.

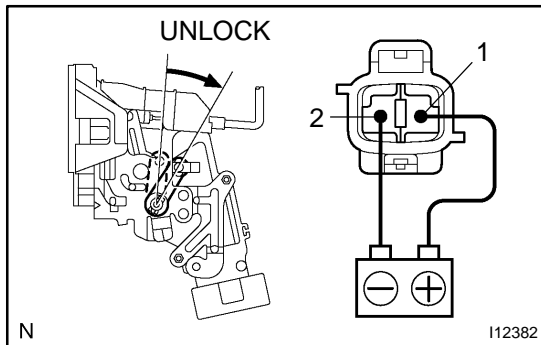


**9. Front right side door:
INSPECT DOOR LOCK MOTOR OPERATION**

(a) Connect the positive (+) lead from the battery to terminal 5 and the negative (-) lead to terminal 6, and check that the door lock link moves to UNLOCK position.

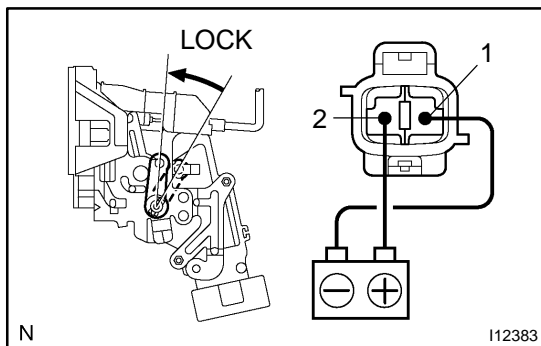


- (b) Reverse the polarity and check that the door lock link moves to LOCK position.
If operation is not as specified, replace the door lock assembly.

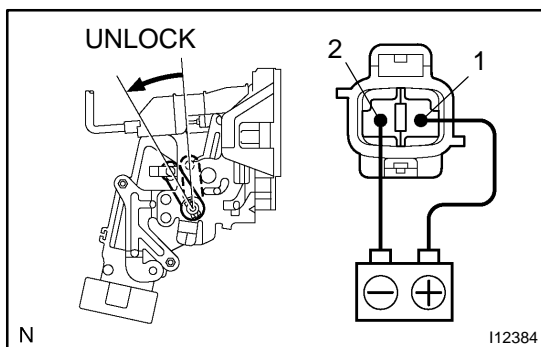


**10. Rear left side door (Except Puerto Rico models):
INSPECT DOOR LOCK MOTOR OPERATION**

- (a) Connect the positive (+) lead from the battery to terminal 1 and the negative (-) lead to terminal 2, and check that the door lock link moves to UNLOCK position.

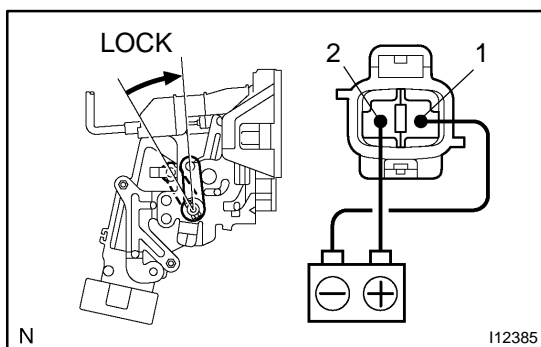


- (b) Reverse the polarity and check that the door lock link moves to LOCK position.
If operation is not as specified, replace the door lock assembly.

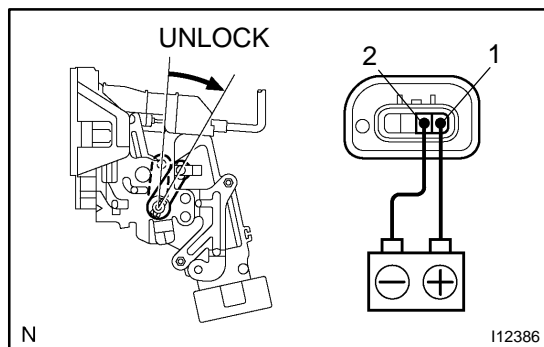


**11. Rear right side door (Except Puerto Rico models):
INSPECT DOOR LOCK MOTOR OPERATION**

- (a) Connect the positive (+) lead from the battery to terminal 1 and the negative (-) lead to terminal 2, and check that the door lock link moves to UNLOCK position.

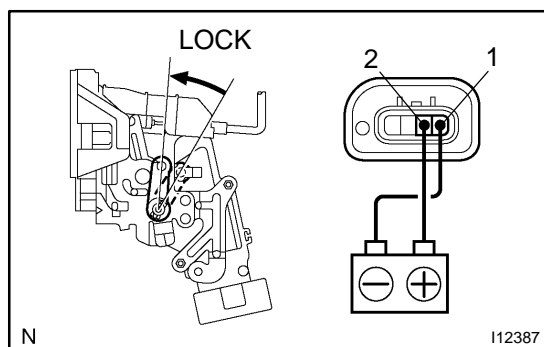


- (b) Reverse the polarity and check that the door lock link moves to LOCK position.
If operation is not as specified, replace the door lock assembly.



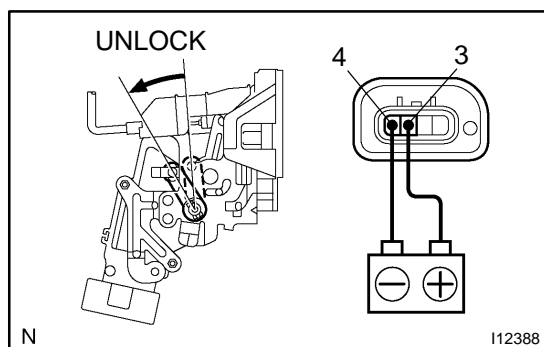
**12. Rear left side door (Puerto Rico models):
INSPECT DOOR LOCK MOTOR OPERATION**

- (a) Connect the positive (+) lead from the battery to terminal 1 and the negative (-) lead to terminal 2, and check that the door lock link moves to UNLOCK position.



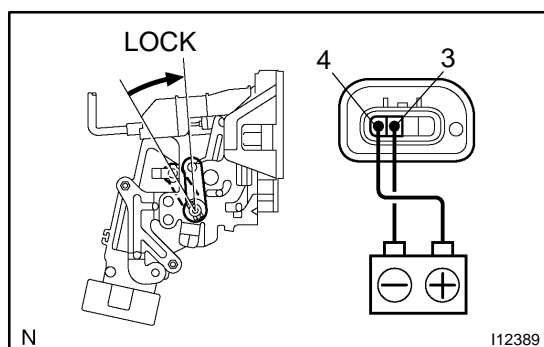
- (b) Reverse the polarity and check that the door lock link moves to LOCK position.

If operation is not as specified, replace the door lock assembly.



**13. Rear right side door (Puerto Rico models):
INSPECT DOOR LOCK MOTOR OPERATION**

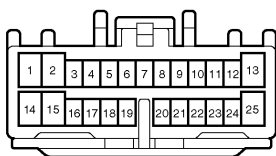
- (a) Connect the positive (+) lead from the battery to terminal 3 and the negative (-) lead to terminal 4, and check that the door lock link moves to UNLOCK position.



- (b) Reverse the polarity and check that the door lock link moves to LOCK position.

If operation is not as specified, replace the door lock assembly.

Wire harness side:



N

I12350

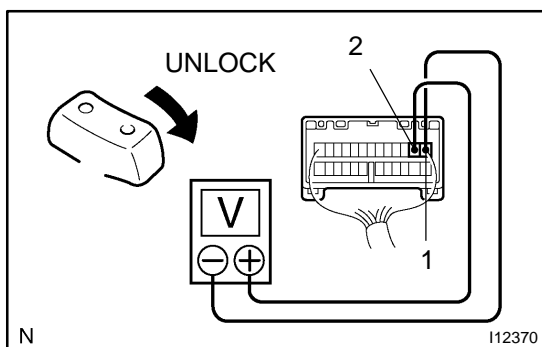
14. INSPECT DOOR LOCK CONTROL RELAY CIRCUIT

Disconnect the connector from the door lock control relay and inspect the connector on the wire harness side, as shown in the chart.

Tester connection	Condition	Specified condition
5 - Ground	Driver door unlock detection switch OFF (door locked)	No continuity
5 - Ground	Driver door unlock detection switch ON (door unlocked)	Continuity
7 - Ground	Driver's and passenger's door lock control switch UNLOCK or OFF	No continuity
7 - Ground	Driver's or passenger's door lock control switch LOCK	Continuity
8 - Ground	Driver's and passenger's door lock control switch LOCK or OFF	No continuity
8 - Ground	Driver's or passenger's door lock control switch UNLOCK	Continuity
9 - Ground	Driver's door key lock and unlock switch UNLOCK or OFF	No continuity
9 - Ground	Driver's door key lock and unlock switch LOCK	Continuity
9 - Ground	Front passenger's door key lock and unlock switch UNLOCK or OFF	No continuity
9 - Ground	Front passenger's door key lock and unlock switch LOCK	Continuity
10 - Ground	Driver's door key lock and unlock switch LOCK or OFF	No continuity
10 - Ground	Driver's door key lock and unlock switch UNLOCK	Continuity
11 - Ground	Front passenger's door key lock and unlock switch LOCK or OFF	No continuity
11 - Ground	Front passenger's door key lock and unlock switch UNLOCK	Continuity
18 - Ground	Driver's door courtesy switch OFF	No continuity
18 - Ground	Driver's door courtesy switch ON	Continuity
19 - Ground	Front passenger's door courtesy switch OFF	No continuity
19 - Ground	Front passenger's door courtesy switch ON	Continuity
19 - Ground	Rear left side door courtesy switch OFF	No continuity
19 - Ground	Rear left side door courtesy switch ON	Continuity
19 - Ground	Rear right side door courtesy switch OFF	No continuity
19 - Ground	Rear right side door courtesy switch ON	Continuity
25 - Ground	Constant	Continuity
3 - Ground	Ignition switch OFF	No voltage

3 - Ground	Ignition switch ON	Battery positive voltage
14 - Ground	Constant	Battery positive voltage

If circuit is as specified, inspect the door lock signal.

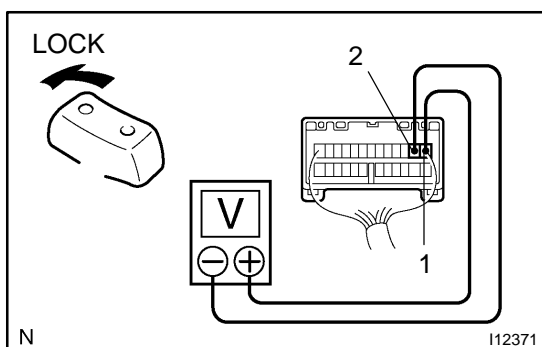


**15. Driver's door lock signal:
INSPECT DOOR LOCK CONTROL RELAY OPERATION**

HINT:

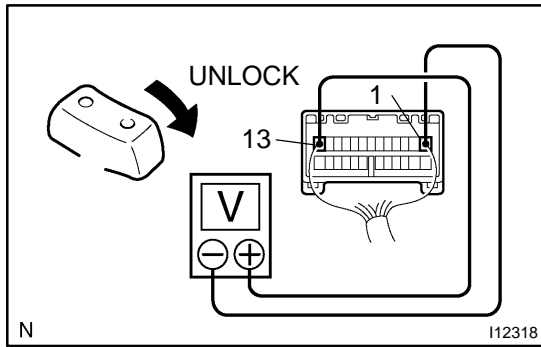
When the relay circuit is as specified, inspect the door lock signal.

- Connect the positive (+) lead from the voltmeter to terminal 2 and the negative (-) lead to terminal 1.
- Set the door lock control switch to UNLOCK and check that the voltage rises from 0 V to battery positive voltage for approximately 0.2 seconds.



- Reverse the polarity of the voltmeter leads.
- Set the door lock control switch to LOCK and check that the voltage rises from 0 V to battery positive voltage for approximately 0.2 seconds.

If operation is not as specified, replace the relay.

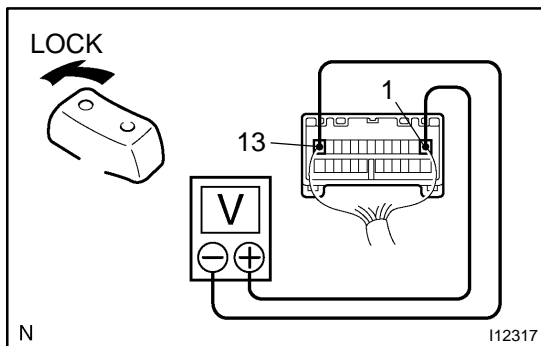


**16. Except driver's door lock signal:
INSPECT DOOR LOCK CONTROL RELAY OPERATION**

HINT:

When the relay circuit is as specified, inspect the door lock signal.

- (a) Connect the positive (+) lead from the voltmeter to terminal 13 and the negative (-) lead to terminal 1.
- (b) Set the door lock control switch to UNLOCK and check that the voltage rises from 0 V to battery positive voltage for approximately 0.2 seconds.



- (c) Reverse the polarity of the voltmeter leads.
- (d) Set the door lock control switch to LOCK and check that the voltage rises from 0 V to battery positive voltage for approximately 0.2 seconds.

If operation is not as specified, replace the relay.